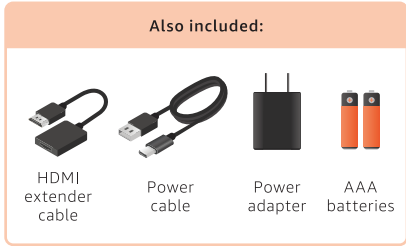


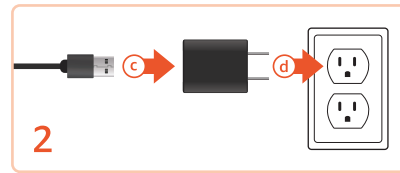
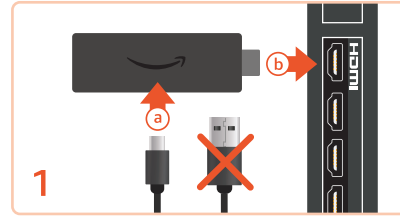
MEET YOUR FIRE TV STICK HD



MEET YOUR ALEXA VOICE REMOTE



CONNECT YOUR FIRE TV STICK HD

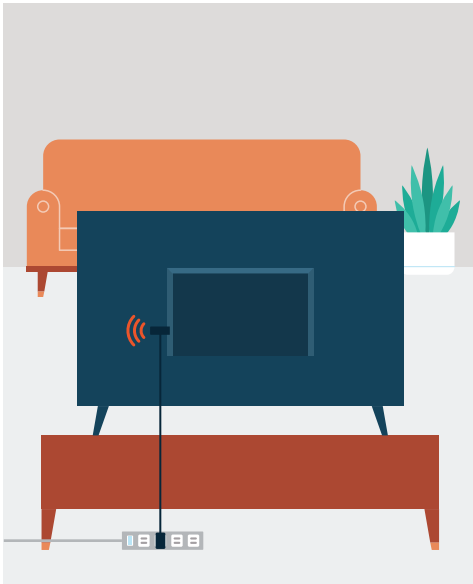


1. Plug the power cable (a) into your Fire TV Stick HD's power port. Next, plug your stick (b) into your TV's HDMI port.
2. Connect the other end of the power cable (c) to the power adapter.* Then, plug the power adapter (d) into a power outlet.

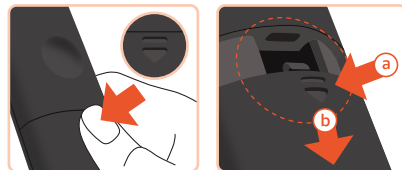
*For the best performance, power your Fire TV Stick HD using the included power adapter.



3. Turn on your TV and switch to the appropriate HDMI input.



SET UP YOUR REMOTE



1. Press and hold your thumb on the arrow to release the latch.
2. Make sure you (a) press the arrow firmly to release the latch as you (b) slide the cover off.
3. Insert included batteries.

Note: If it didn't pair, press and hold Home for 10 seconds.

HELPFUL TIPS



Use the included HDMI extender if it's difficult to plug your Fire TV Stick HD into your TV's HDMI port.



If your new remote doesn't connect, remove and reinsert its batteries.

Replace used batteries with new 1.5V alkaline or 1.2V NiMH rechargeable AAA batteries.

amazon alexa

